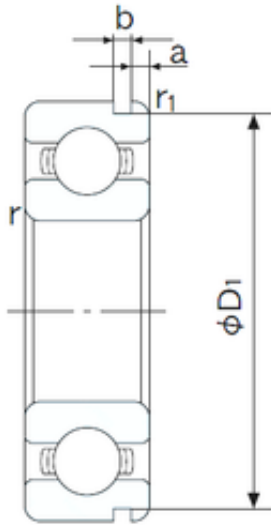




Air Suspension Bearing Co., Ltd



55 mm x 90 mm x 18 mm NACHI 6011N deep groove ball bearings

Bearing No. 6011N

Size	55x90x18 mm
Bore Diameter	55 mm
Outer Diameter	90 mm
Width	18 mm
d	55 mm
D	90 mm
B	18 mm
C	18 mm
a	2.87 mm
b	2.7 mm
r min.	1.1 mm
r1 min.	0.5 mm
D1	86.79 mm
Weight	0.375 Kg
Basic dynamic load rating (C)	28,3 kN
Basic static load rating (C0)	21,3 kN
(Grease) Lubrication Speed	7500 r/min
Bore Type	Cylindrical Bore
Enclosure	Open
Configuration	Single Row
Bore Size	55 mm
Outside Diameter	90 mm
Width	18 mm
Fillet Radius/Chamfer	1.1 mm
r1	0.5 mm

6011N Bearing 2D drawings and 3D CAD models



Air Suspension Bearing Co., Ltd

Groove Width	2.7 mm
Groove Diameter	86.8 mm
a (max)	2.9 mm
Dynamic Load Rating	28,300 N
Static Load Rating	21,300 N
Limiting Speed - Grease	7,700 rpm
Limiting Speed - Oil	9,000 rpm
Factor fo	15.4
Radial Clearance	0.008 to 0.028 mm
da (min)	61 mm
Da (max)	84 mm
Dx (min)	98 mm
ra (max)	1 mm
Cy (max)	5 mm