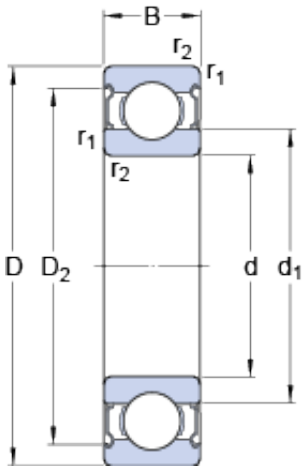




Air Suspension Bearing Co., Ltd



40 mm x 68 mm x 15 mm SKF W 6008-2Z deep groove ball bearings

Bearing No. W 6008-2Z

W 6008-2Z Bearing 2D drawings and 3D CAD models

Size	68x40x15 mm
Bore Diameter	68 mm
Outer Diameter	40 mm
Width	15 mm
d	40 mm
D	68 mm
B	15 mm
d ₁	49.2 mm
D ₂	62.5 mm
r _{1,2} - min.	1 mm
d _a - min.	45 mm
d _a - max.	49 mm
D _a - max.	63.5 mm
r _a - max.	1 mm
Basic dynamic load rating - C	14.6 kN
Basic static load rating - C ₀	11.4 kN
Fatigue load limit - P _u	0.49 kN
Reference speed	22000 r/min
Limiting speed	11000 r/min
Calculation factor - k _r	0.03
Calculation factor - f ₀	15.2
Category	Single Row Ball Bearings
Inventory	0.0
Manufacturer Name	SKF



Air Suspension Bearing Co., Ltd

Minimum Buy Quantity	N/A
Weight / Kilogram	0
Product Group	B00308
Enclosure	2 Metal Shields
Precision Class	ABEC 1 ISO P0
Maximum Capacity / Filling Slot	No
Rolling Element	Ball Bearing
Snap Ring	No
Internal Special Features	No
Cage Material	Stainless Steel
Internal Clearance	C0-Medium
Inch - Metric	Metric
Long Description	40MM Bore; 68MM Outside Diameter; 15MM Outer Race Width; 2 Metal Shields; Ball Bearing; ABEC 1 ISO P0; No Filling Slot; No Snap Ring; No Internal Special Features; C0-Medium Internal Clearance; Stai
Other Features	Deep Groove
Category	Single Row Ball Bearing
UNSPSC	31171504
Harmonized Tariff Code	8482.10.50.68
Noun	Bearing
Keyword String	Ball
Manufacturer URL	http://www.skf.com
Manufacturer Item Number	W 6008-2Z
Weight / LBS	0.399
Bore	1.575 Inch 40 Millimeter
Outside Diameter	2.677 Inch 68 Millimeter
Inner Race Width	0 Inch 0 Millimeter
Outer Race Width	0.591 Inch 15 Millimeter



Air Suspension Bearing Co., Ltd

d_1	49.2 mm
D_2	62.5 mm
$r_{1,2}$ min.	1 mm
d_a min.	45 mm
d_a max.	49 mm
D_a max.	63.5 mm
r_a max.	1 mm
Basic dynamic load rating C	14.6 kN
Basic static load rating C_0	11.4 kN
Fatigue load limit P_u	0.49 kN
Calculation factor k_r	0.03
Calculation factor f_0	15.2
Mass bearing	0.18 kg