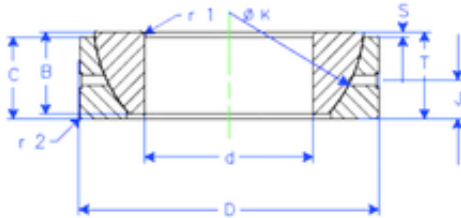




Air Suspension Bearing Co., Ltd

190 mm x 290 mm x 64 mm Enduro GE 190 SX
plain bearings



GE 190 SX Bearing 2D drawings and 3D CAD models

Bearing No. GE 190 SX

Size	190x290x64 mm
Bore Diameter	190 mm
Outer Diameter	290 mm
Width	64 mm
d	190 mm
D	290 mm
T	64 mm
B	64 mm
C	62 mm
r1 min.	3 mm
r2 min.	3 mm
J	30 mm
K	275 mm
S	26 mm
Weight	18,19811104 Kg
Basic dynamic load rating (C)	1500 kN