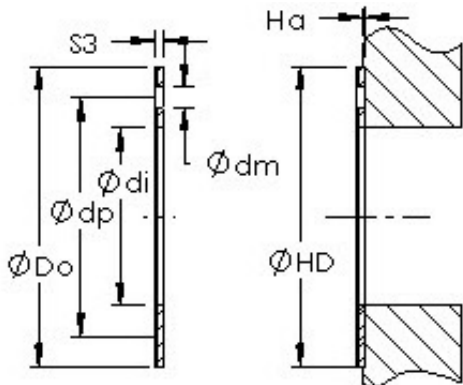




Air Suspension Bearing Co., Ltd



AST20 WC281B Bearing 2D drawings and 3D CAD models

AST AST20 WC281B plain bearings

Bearing No. AST20 WC281B

Bore Diameter	49,2252 mm
Outer Diameter	76,2 mm
Bearing Type	thrust washer
Shaft Dia., Nominal (d)	1.9380
Bearing Outside Diameter, Nominal(Do)	3.000
Washer Inside Diameter, Nominal (di)	2
Washer Inside Diameter Tolerance (di tol.) - +.010 / -0	
Washer Outside Diameter, Nominal (Do)	3
Washer Outside Diameter Tolerance (Do tol.) - +0 / -.010	
Washer Thickness, Nominal (S3)	0
Washer Thickness Tolerance (S3 tol.) - +.035 / -0	
Mounting Hole Dia. (dm)	0.192
Mounting Hole Pitch Dia. (dp)	2.505
Housing Counterbore Depth (Ha)	0.07
Housing Counterbore Depth Tolerance (Ha tol.) - +.010 / -.010	
Housing Counterbore Diameter, Nominal (HD)	3.000



Air Suspension Bearing Co., Ltd

Housing Counterbore Diameter Tolerance (HD tol.) - $+0.010 / -0$	$+0.010 / 0$
Material	Carbon steel shell with POM plastic liner