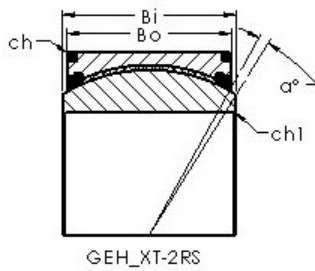
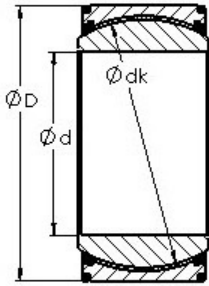




Air Suspension Bearing Co., Ltd



AST GEH110XT-2RS plain bearings

Bearing No. GEH110XT-2RS

Bore Diameter	110 mm
Outer Diameter	160 mm
Bearing Type - double fractured	extra wide, sealed
Bore Dia (d)	110.0000
Outer Dia (D)	160.0000
Outer Width (Bo)	74.0000
Inner Width (Bi)	78.0000
Dynamic Load Rating (Cr)	1,600,000
Static Load Rating (Cor)	3,860,000
Max. shaft corner radius, or 45 deg. chamfer (ch1)	1.000
Max. housing corner radius, or 45 deg. chamfer (ch)	1.000
Spherical Diameter (dk or Dk)	145.000
Mis-alignment Angle (a deg.)	2
Weight (g)	6,210.00
Material	Inner ring and outer ring are made from 52100 chrome steel, or equivalent

GEH110XT-2RS Bearing 2D drawings and 3D CAD models