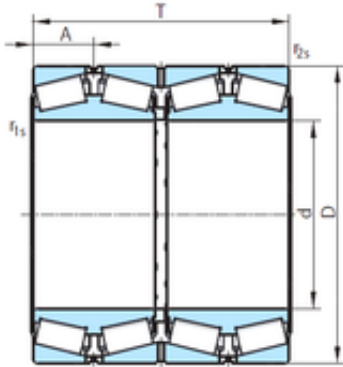




Air Suspension Bearing Co., Ltd

PSL PSL 612-303 tapered roller bearings



Bearing No. PSL 612-303

| | |
|-------------------------------|--------------------------|
| Size | 304.902x412.648x266.7 mm |
| Bore Diameter | 304,902 mm |
| Outer Diameter | 412,648 mm |
| Width | 266,7 mm |
| d | 304,902 mm |
| D | 412,648 mm |
| T | 266,7 mm |
| r1 min. | 3 mm |
| r2 min. | 3 mm |
| A | 63,18 mm |
| db min | 325 mm |
| Db min. | 377 mm |
| ra max. | 2,5 mm |
| Weight | 102,2 Kg |
| Basic dynamic load rating (C) | 2730 kN |
| Basic static load rating (C0) | 7961 kN |
| (Grease) Lubrication Speed | 550 r/min |
| (Oil) Lubrication Speed | 790 r/min |
| Calculation factor (e) | 0,39 |
| Calculation factor (Y0) | 1,7 |
| Calculation factor (Y1) | 1,74 |

PSL 612-303 Bearing 2D drawings and 3D CAD models